



# MADAME RÊVE

HÔTEL  
RUE DU LOUVRE  
PARIS  
1<sup>ER</sup>

Located in the heart of Paris, in the iconic Poste du Louvre building, the Madame Rêve Hotel is part of the revival of the luxury hotel industry. Over 7,000 m<sup>2</sup>, Madame Rêve offers rooms and suites with a view, a wellness area, two restaurants and a huge rooftop, with an unprecedented view of Paris.

## 5-star hotel

- An ideal location
- A 7000 m<sup>2</sup> area
- 82 rooms and suites located on the top floor of the hotel
- A wellness area
- Two restaurants
- A rooftop

## Rooms & Suites

- 82 rooms and suites on one floor, including 43 rooms with terraces/balconies
- Between 25 m<sup>2</sup> and 80 m<sup>2</sup>
- Exceptional view of Paris roofs, *Saint-Eustache Church* or *Eiffel Tower*
- Garden view

## Rooftop

- Overlooking all of Paris, 1000 m<sup>2</sup> entirely covered with vegetation
- cocktails and fingerfood

## Restaurants

### Kitchen by Stéphanie Le Quellec

- A historical decor
- Contemporary French cuisine by a two Michelin star chef
- A spectacular bar
- A terrace, cours Gutenberg

### La Plume

- A panoramic restaurant
- A stunning vegetal patio
- A cuisine inspired by the recipes of a contemporary Japan

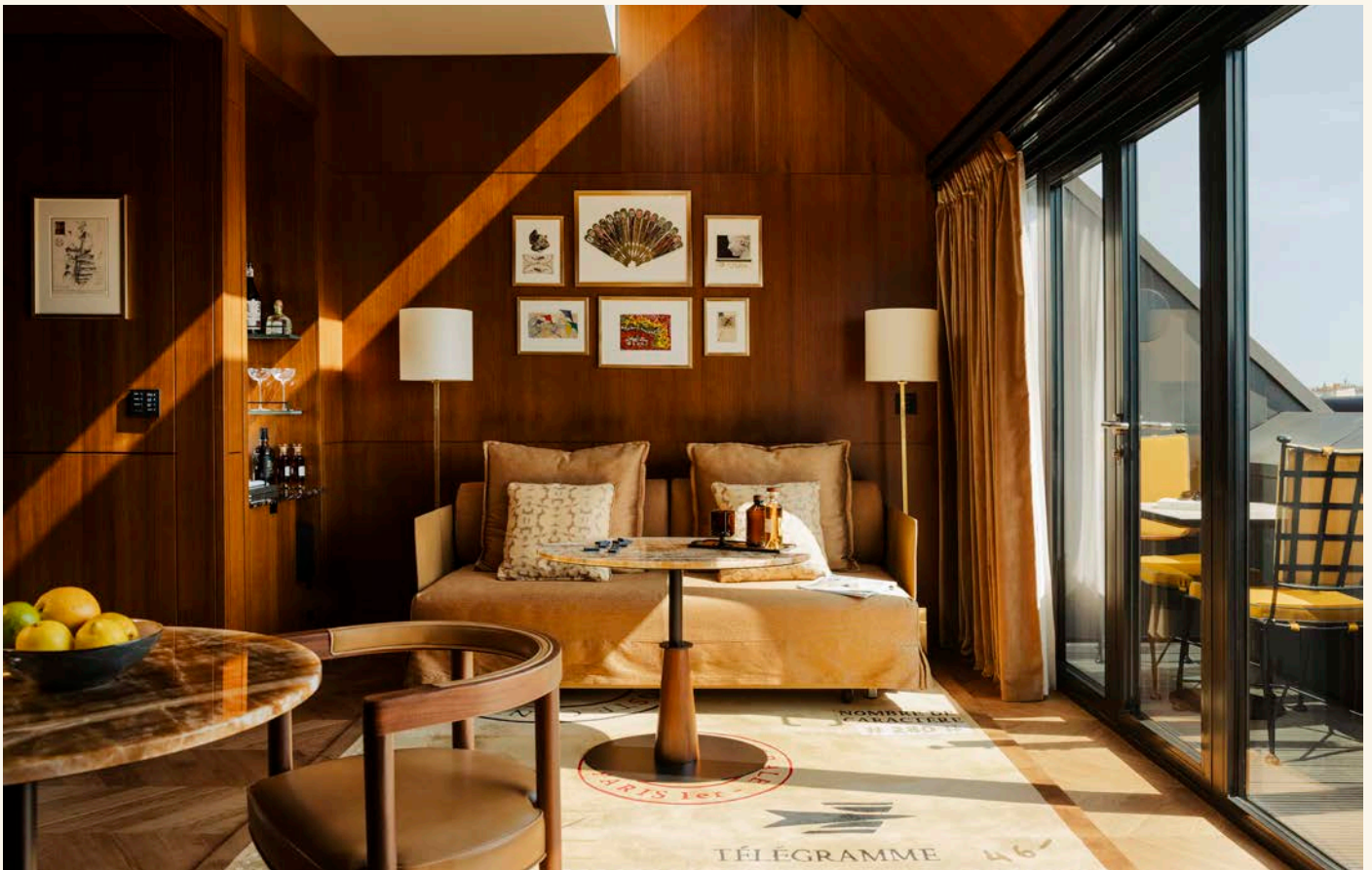
## Wellness area

- 150 m<sup>2</sup> conceived as a boudoir
- 2 beauty cabins
- 1 sauna - 1 fitness room

## Eco-responsible approach

5 ecological labels: Leed Core, Breeam, Effnergie Renovation, Shell and NF-HQE.





Madame Rêve  
 48, rue du Louvre, 75001 Paris  
 France  
[www.madamereve.com](http://www.madamereve.com)

Emilie Maisonobe  
 Director of Sales & Marketing  
[emilie.maisonobe@madamereve.com](mailto:emilie.maisonobe@madamereve.com)  
 07 70 15 15 66

  
 @hotelmadamereve  
 @laplumerivedroite  
 @roof\_paris